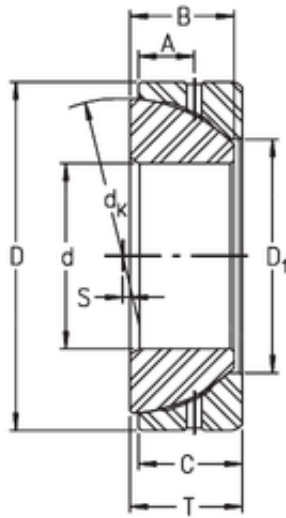




AMERICAN BEARING MFG.CORP.



200 mm x 310 mm x 66 mm Timken GE200SX
plain bearings

Bearing No. GE200SX

Size	200x310x70 mm
Bore Diameter	200 mm
Outer Diameter	310 mm
Width	70 mm
d	200 mm
D	310 mm
T	70 mm
B	66 mm
C	66 mm
dk	290 mm
s	26 mm
A	35 mm
D1	229,2 mm
Weight	22,5 Kg
Basic dynamic load rating (C)	1560 kN

GE200SX Bearing 2D drawings and 3D CAD models