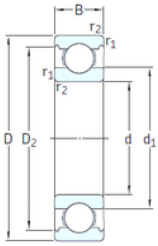




# AMERICAN BEARING MFG.CORP.



VA201



2Z/VA201



2Z/VA208



2Z/VA228

25 mm x 52 mm x 15 mm SKF 6205-2Z/VA201 deep groove ball bearings

Bearing No. 6205-2Z/VA201

6205-2Z/VA201 Bearing 2D drawings and 3D CAD models

Size	25x52x15 mm
Bore Diameter	25 mm
Outer Diameter	52 mm
Width	15 mm
d	25 mm
D	52 mm
B	15 mm
C	15 mm
d1	34,3 mm
r1 min.	1 mm
r2 min.	1 mm
D2	46,3 mm
Weight	0,13 Kg
Temperature -	30 to +250 °
Basic static load rating (C0)	7,8 kN
Category	Single Row Ball Bearings
Inventory	0.0
Manufacturer Name	SKF
Minimum Buy Quantity	N/A
Weight / Kilogram	0.137
Product Group	B00308
Enclosure	2 Metal Shields
Precision Class	ABEC 1   ISO P0
Maximum Capacity / Filling Slot	No
Rolling Element	Ball Bearing



## AMERICAN BEARING MFG.CORP.

Snap Ring	No
Internal Special Features	Polyalkylene Glycol/Graphite Mixture Filled
Cage Material	Steel
Internal Clearance	C0-Medium
Inch - Metric	Metric
Long Description	25MM Bore; 52MM Outside Diameter; 15MM Outer Race Width; 2 Metal Shields; Ball Bearing; ABEC 1   ISO P0; No Filling Slot; No Snap Ring; Polyalkylene Glycol/Graphite Mixture Filled Internal Special Fea
Other Features	Deep Groove   Extreme Temperature Variant
Category	Single Row Ball Bearing
UNSPSC	31171504
Harmonized Tariff Code	8482.10.50.68
Noun	Bearing
Keyword String	Ball
Manufacturer URL	<a href="http://www.skf.com">http://www.skf.com</a>
Manufacturer Item Number	6205-2Z/VA201
Weight / LBS	0.379
Bore	0.984 Inch   25 Millimeter
Outside Diameter	2.047 Inch   52 Millimeter
Inner Race Width	0 Inch   0 Millimeter
Outer Race Width	0.591 Inch   15 Millimeter
bore diameter:	25 mm
precision rating:	Not Rated
outside diameter:	52 mm
finish/coating:	Uncoated
overall width:	15 mm
cage material:	Steel



## AMERICAN BEARING MFG.CORP.

bore type:	Round
outer ring width:	15 mm
closure type:	Double Shielded
fillet radius:	1 mm
row type & fill slot:	Single Row Non-Fill Slot
maximum rpm:	230 RPM
internal clearance:	C0
series:	62
operating temperature range:	-20 to +480 ° F
resistance features:	Corrosion Resistant, Extreme Temperature
static load capacity:	7.8 kN
$d_1$	34.35 mm
$D_2$	46.21 mm
$r_{1,2}$ min.	1 mm
$d_a$ min.	30.6 mm
$d_a$ max.	34.3 mm
$D_a$ max.	46.4 mm
$r_a$ max.	1 mm
Basic dynamic load rating C	14.8 kN
Basic static load rating $C_0$	7.8 kN
Limiting speed	110 r/min
Limiting temperature T max.	250 ° C
Mass bearing	0.13 kg