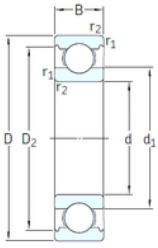




AMERICAN BEARING MFG.CORP.



VA201



2Z/VA201



2Z/VA208



2Z/VA228

40 mm x 80 mm x 18 mm SKF 6208/VA201
deep groove ball bearings

Bearing No. 6208/VA201

6208/VA201 Bearing 2D drawings and 3D CAD models

Size	40x80x18 mm
Bore Diameter	40 mm
Outer Diameter	80 mm
Width	18 mm
d	40 mm
D	80 mm
B	18 mm
C	18 mm
d1	52,6 mm
r1 min.	1,1 mm
r2 min.	1,1 mm
D2	69,8 mm
Weight	0,37 Kg
Temperature -	30 to +250 °
Basic static load rating (C0)	19 kN
Category	Single Row Ball Bearings
Inventory	0.0
Manufacturer Name	SKF
Minimum Buy Quantity	N/A
Weight / Kilogram	0.368
Product Group	B00308
Enclosure	Open
Precision Class	ABEC 1 ISO P0
Maximum Capacity / Filling Slot	No
Rolling Element	Ball Bearing



AMERICAN BEARING MFG.CORP.

Snap Ring	No
Internal Special Features	Polyalkylene Glycol/Graphite Mixture Filled
Cage Material	Steel
Internal Clearance	C0-Medium
Inch - Metric	Metric
Long Description	40MM Bore; 80MM Outside Diameter; 18MM Outer Race Width; Open; Ball Bearing; ABEC 1 ISO P0; No Filling Slot; No Snap Ring; Polyalkylene Glycol/Graphite Mixture Filled Internal Special Features; C0-M
Other Features	Deep Groove Extreme Temperature Variant
Category	Single Row Ball Bearing
UNSPSC	31171504
Harmonized Tariff Code	8482.10.50.68
Noun	Bearing
Keyword String	Ball
Manufacturer URL	http://www.skf.com
Manufacturer Item Number	6208/VA201
Weight / LBS	0.807
Bore	1.575 Inch 40 Millimeter
Outside Diameter	3.15 Inch 80 Millimeter
Inner Race Width	0 Inch 0 Millimeter
Outer Race Width	0.709 Inch 18 Millimeter
bore diameter:	40 mm
static load capacity:	19 kN
outside diameter:	80 mm
precision rating:	Not Rated
overall width:	18 mm
finish/coating:	Uncoated



AMERICAN BEARING MFG.CORP.

bore type:	Round
cage material:	Steel
closure type:	Open
outer ring width:	18 mm
row type & fill slot:	Single Row Non-Fill Slot
fillet radius:	1.1 mm
snap ring included:	Without Snap Ring
maximum rpm:	150 RPM
internal clearance:	C0
series:	62
operating temperature range:	-20 to +480 ° F
resistance features:	Corrosion Resistant, Extreme Temperature
d_1	52.6 mm
D_2	69.8 mm
$r_{1,2}$ min.	1.1 mm
d_a min.	47 mm
D_a max.	73 mm
r_a max.	1 mm
Basic dynamic load rating C	32.5 kN
Basic static load rating C_0	19 kN
Limiting speed	150 r/min
Limiting temperature T max.	250 ° C
Mass bearing	0.36 kg